

April 14, 2026

Object: Drilling activities on the Opinaca Project

The present letter is to update you about Targa Resources Corp. (the “Company”) exploration activities.

Summary

The Opinaca project is made of 1,651 contiguous claims (85,267 ha) and was first staked by the Company in September 2022. Most of the claims are located on trapline M02 and overlap M03, M08 & VC27 (Figure 1). Drilling is planned this summer, overlapping **trapline M02**.

Diamond Drilling

The Opinaca Project is undergoing its second diamond drilling program, scheduled to start in **July 2026**. Our initial plan is to drill up to ~5,000 meters over approximately **1-month** with ~2 rigs, testing anomalies identified during previous exploration. Pending the results of this program, an additional ~5,000 meters of drilling may be conducted at a later date; we will notify you if and when this occurs. While exact drill locations are still being finalized, the enclosed map (Figures 2 and 3) provides an overview of the area of interest.

During this period, a team of 1 project manager, 1 project geologist, 2 technicians, 10 drillers, 2 drill foreman, 1 helicopter pilot and 1 mechanic will support the program. Field operations will be based out of the Winsome camp along the Trans-Taïga Road (yellow star in Figure 3), which overlaps with **trapline CH39**.

No access roads are expected since this is a helicopter-supported program. All required authorizations and permits will be obtained before starting exploration work (ATI, Intervention Permit, REAFIE, etc.). Any contaminated liquid, such as used oil, will be contained in approved containers on-site. These, along with the waste produced, will be removed, transported and disposed of by the drilling contractor back in Chibougamau, where it is then sorted and picked up by the Waste Management company *Sanivac*.

An emergency response plan (ERP) is developed and regularly updated before the start of each exploration program. This plan is distributed to all contractors and employees. It includes guidelines for responding to events like forest fires, ice incidents, and spills which are crucial for protecting personnel, preventing environmental damage, and maintaining regulatory compliance.

Targa Exploration Corp.
Suite 1723 – 595 Burrard Street
Vancouver BC, V7X 1J1



Regards,

Alex Gallardo
Sustainable Development Manager
On behalf of **Targa Exploration Corp.**
relations@kenorlandminerals.com

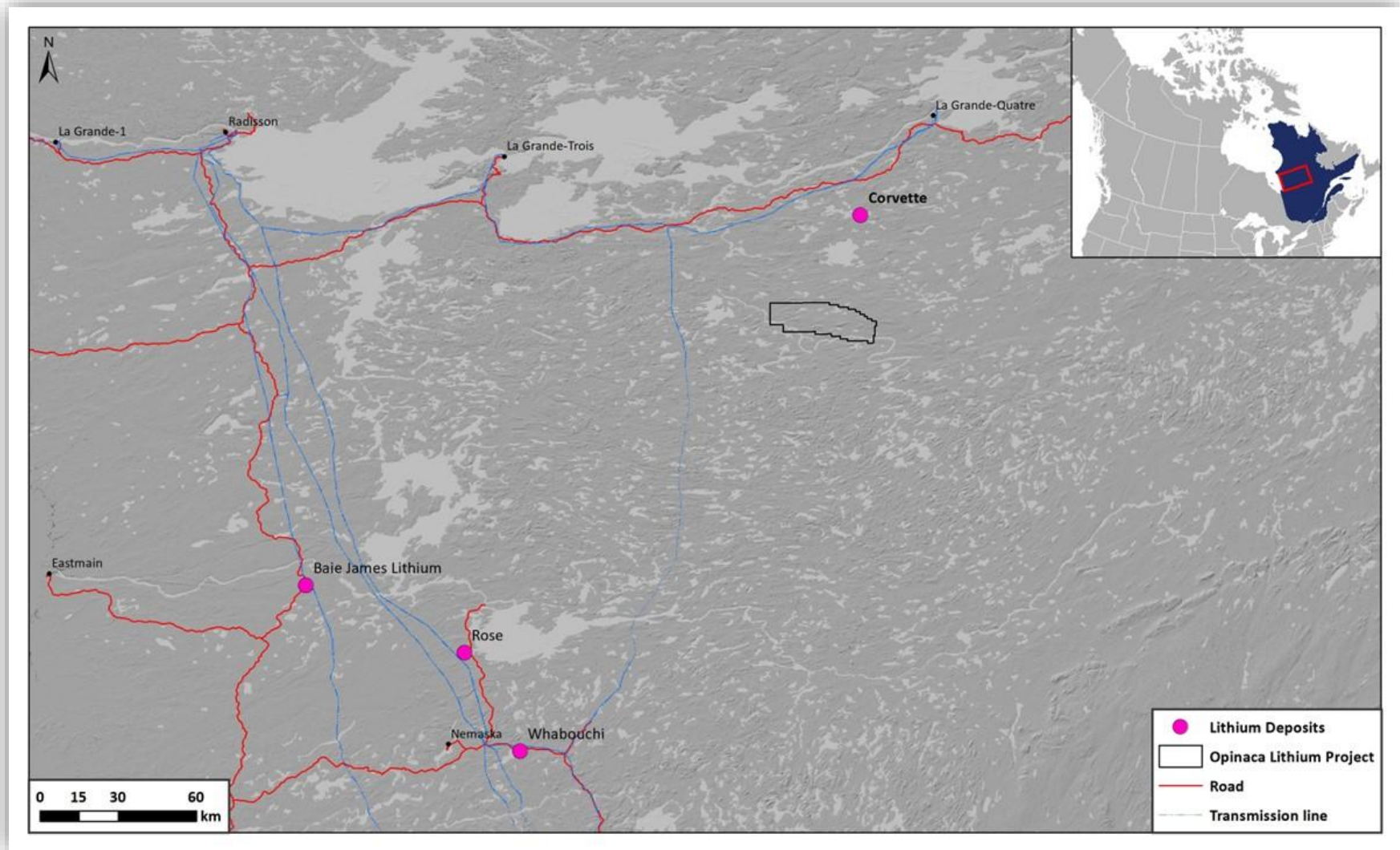


Figure 1. Location of the Opinaca Project

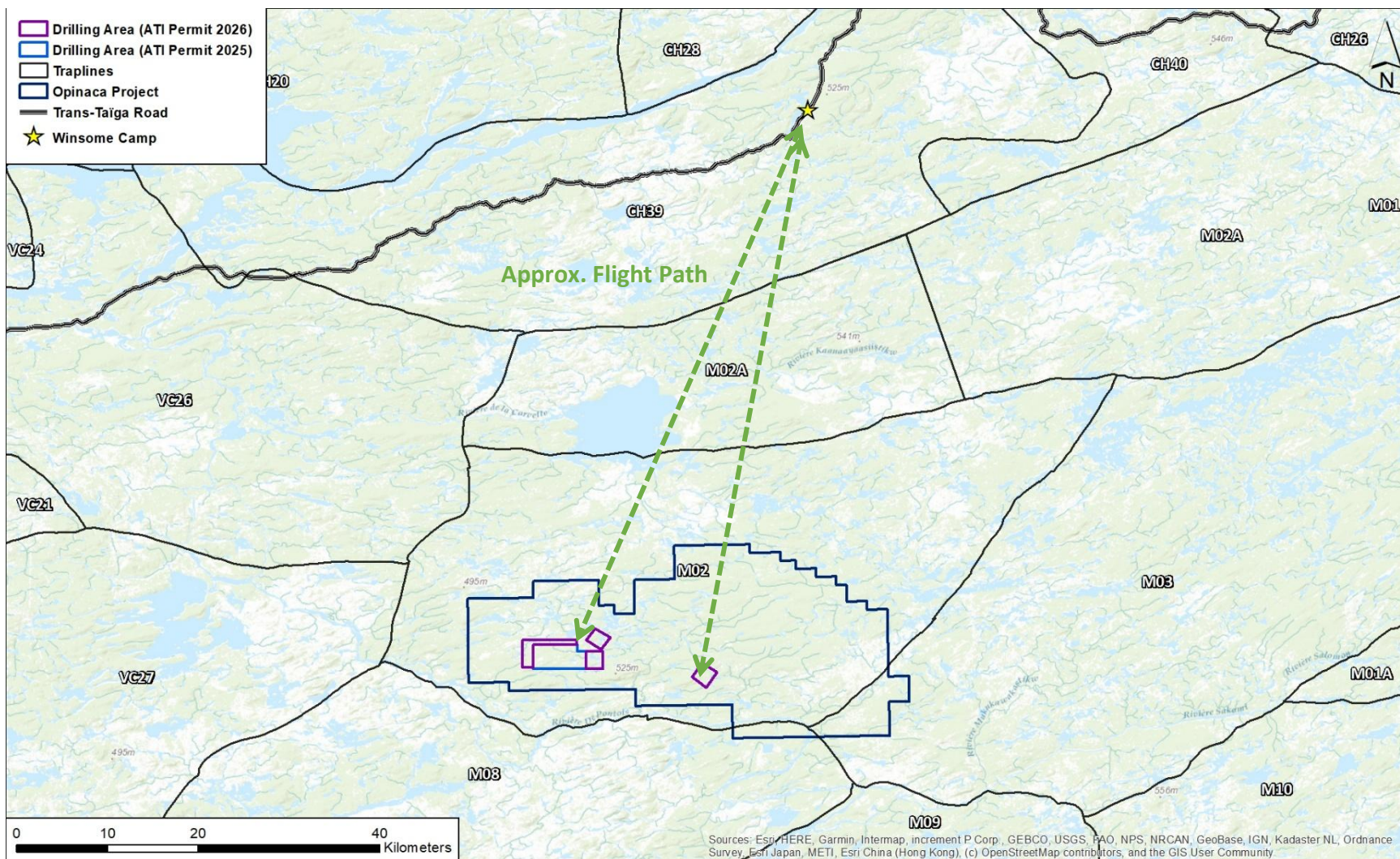


Figure 2. Opinaca project over Cree traplines and tentative helicopter flight path

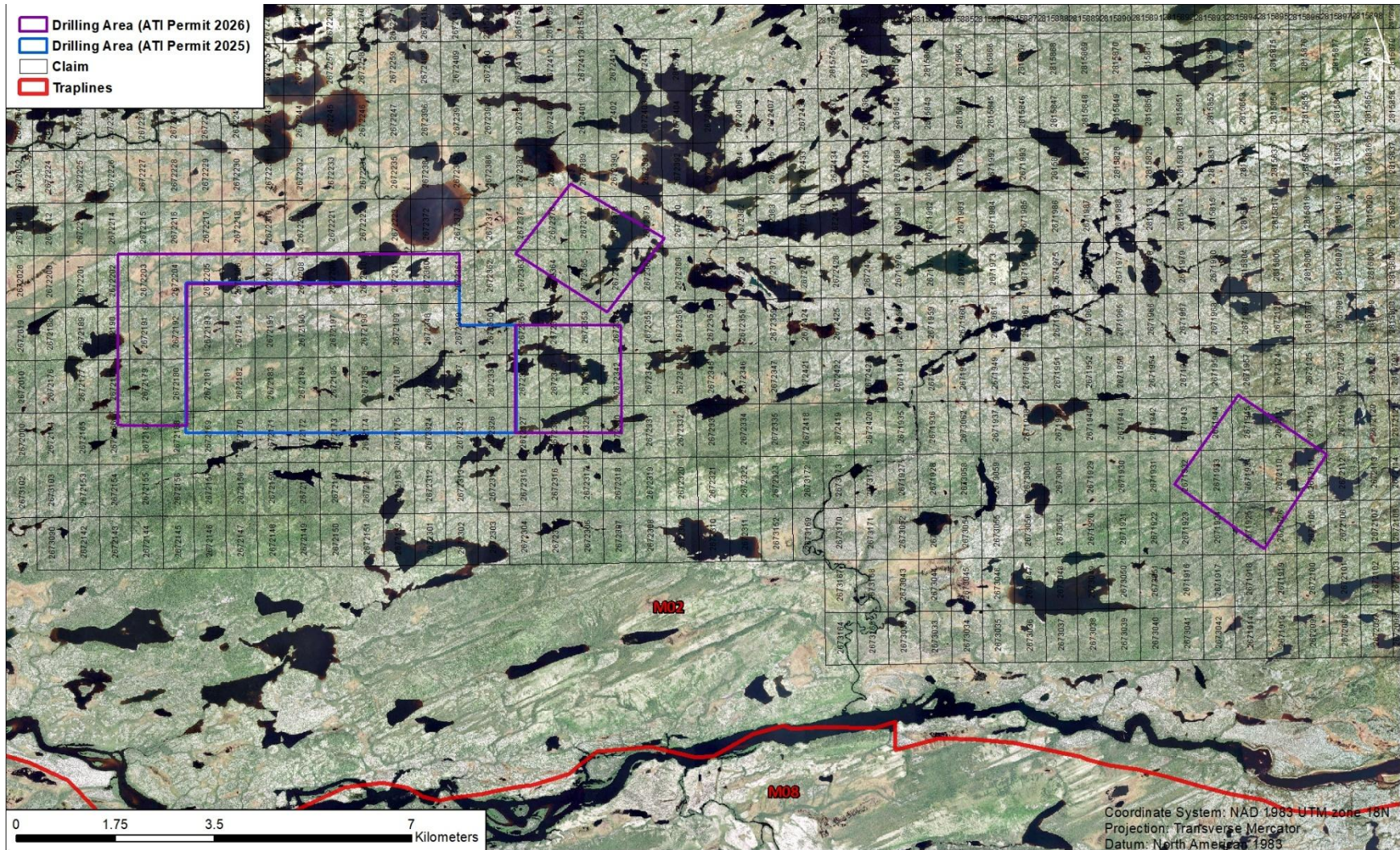


Figure 3. Drilling Area of Interest overlapping Cree Trapline M02